



Be Smart. Be Safe. Be Sure.®

SAFETY PRODUCTS

FOOTWEAR - EUROPEAN CATALOGUE

ICE CLEATS & TRACTION AIDS *Page 2-7*

OVERSHOES *Page 8-11*

INSOLES *Page 12-13*

RUBZ *Page 14*

20 26



SLIP PROTECTION

SLIP PROTECTION



COST SAVINGS

Weather related worker injuries are the

#1

cause of Worker's Compensation Claims



TRACTION PERFORMANCE

SureWerx® delivers the most comprehensive range of ice and snow traction aid products, including the original and industry leading K1 Series® mid-sole ice cleat and the Due North® brand of full foot and heel style solutions.

No matter the application, work environment, or type of footwear, we have the depth and breadth necessary to help reduce the risk of slips and falls whether you are at work or play.



End-users can prevent many injuries and save millions by providing ice traction solutions to their employees

FEATURED PRODUCTS

Browse our **traction aids** and **ice cleats** ranging from **mid-sole, heel, all-purpose, heavy duty** and more. All specifically designed for either industrial or recreational use. Products guaranteed to help you get a grip.

TRANSITIONAL TRACTION

Great for situations that require lots of indoor/outdoor transition such as:

Couriers/drivers

Office workers in parking lot

Homecare providers

MID-SOLE



FULL-SOLE

ALL DAY TRACTION

Great for situations that require lots of all day traction such as:

Construction

Rail workers

Mail workers

A / Eine / Une Marque / Una Marca / Un Marchio



Brand / Marke



K1® Ice Cleats



K1 | MID-SOLE

ORIGINAL

- Ideal for boots with a defined heel

Sizes: ONE SIZE FITS MOST

Product No	Description	Case Qty/MOQ
K1MID	K1 MID-SOLE Original	25 pairs



K1MID

LOW PROFILE

- Narrower rubber platform and shorter studs ideal for footwear with shallow arches

Sizes: ONE SIZE FITS MOST

Product No	Description	Case Qty/MOQ
K1MID-LP	K1 MID-SOLE Low Profile	25 pairs



K1MID-LP



EASY TRANSITION

Patented mid-sole traction pad rotates, providing traction when needed.

Outstanding traction



10 ice-penetrating tungsten carbide spikes reduce risk of slips and falls

HEALTH SAFETY PRODUCTIVITY

Finding a better way

SLIP PROTECTION

K1® Traction Aids

K1 SERIES® SG1



SLIP PROTECTION

K1 Series® SG1 traction aids help prevent slips and falls on wet, oily, greasy, and even soapy surfaces. The full foot design is made with an oil-resistant material and features a unique tread pattern to channel liquids away while simultaneously increasing foot contact with the ground.

- Special tread pattern channels liquids away while increasing foot contact with the ground
- Tough industrial-grade oil resistant material is durable and made to last
- Synthetic rubber material is comfortable, maintains flexibility, and is easy to clean
- Large toe-box provides a snug yet comfortable fit over your footwear
- Built-in retention strap ensures a secure fit throughout the entire day
- Molded one-piece design allows maximum stretch for an easy fit
- Unique inner lining effectively grips the footwear sole to prevent sliding
- Extended pull tab allows convenient on and off and effortless wearing
- Tread pattern extends beyond the bottom of the foot to account for pronation or changes in gait



Product No	Description	Case Qty/MOQ
V9553510-XS	K1 SG1 Traction Aids - XS	24 pairs
V9553510-S	K1 SG1 Traction Aids - S	24 pairs
V9553510-M	K1 SG1 Traction Aids - M	24 pairs
V9553510-L	K1 SG1 Traction Aids - L	24 pairs
V9553510-XL	K1 SG1 Traction Aids - XL	24 pairs

Sizes:

XS (Men's 3.5-5, Women's 5-6.5)

S (Men's 5.5-7, Women's 7-8.5)

M (Men's 7.5-9, Women's 9-10.5)

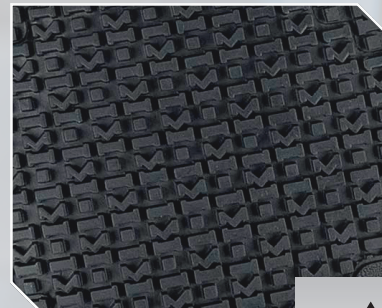
L (Men's 9.5-11, Women's 11-13.5)

XL (Men's 11.5-13, Women's 13.5-15)



MAXIMIZE GRIP

Provides maximum grip on slippery surfaces covered in water, oil, grease, soap, and more



MADE TO LAST
Industrial grade
oil resistant material



A / Eine / Une Marque / Una Marca / Un Marchio



Brand / Marke

Ordering E-mail EU eusales@surewerx.com

Ordering E-mail UK uksales@surewerx.com

www.surewerx.eu

Due North® Traction Aids

GRIP PRO™ SPIKELESS



- The Due North GripPro™ Spikeless Traction Aids are designed for workers requiring traction and are frequently transitioning from outdoor to indoor surfaces or working indoors.
- The non-spiked design is non-marring and will provide extra grip in numerous working environments.
- 11 (22/pair) patented hi-viz chevrons are strategically placed to increase grip and reduce the risk of slips and falls.
- Specially designed treads channel water away to deliver enhanced traction.
- Natural rubber material with proprietary polymer blend maintains flexibility even in sub-zero temperatures.
- Slip-On design fits snugly over boots and shoes.
- Easy on-off pull tab provides quick adjustment
- Can be worn while driving, climbing ladders, and walking on grates.



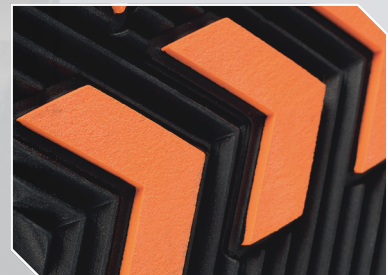
Product No	Description	Case Qty/MOQ
V3553570-S/M	GripPro Spikeless- Sml/Med	24 pairs
V3553570-L/XL	GripPro Spikeless- Lrg/Xlg	24 pairs

Sizes: S/M (fits: UK M 3.5-9.5, W 2.5-8.5; EURO 36-43)
L/XL (fits: UK M 10-12.5, W 9-10.5; EURO 44-47)



SPIKELESS DESIGN

Ensures no damage to surfaces - Ideal for transitioning from outdoors to indoors - Warehousing, delivery, construction, first responders, and much more



HI-VIZ CHEVRONS

Strategically placed to increase grip and reduce the risk of slips and falls

HEALTH SAFETY PRODUCTIVITY

Finding a better way

Due North® Traction Aids

EVERYDAY G3



- 360-Degree spike pattern provides more push-off and lateral grip.
- The patented Ice Diamond Military Grade Tungsten carbide spikes are integrated into the new open/ close split rubber tread for improved traction.
- 12 spikes per pair.

Sizes: S/M (fits: UK M 2-6.5, W 2.5-7; EURO 35-40),
L/XL (fits: UK M 7.5-13.5, W 7.5+; EURO 41-49)



Product No	Description	Case Qty/MOQ
V3551270-L/XL	Everyday G3 Traction Aid - Lrg/Xlg	24 pairs
V3551270-S/M	Everyday G3 Traction Aid - Sml/Med	24 pairs

EVERYDAY PRO



- 100% Natural Rubber stays strong and retains elasticity in subzero temperatures for maximized durability.
- New & improved toe-box design enhances fit and function along with a 360-degree spike pattern that provides more push and lateral grip.
- 12 Military Grade Tungsten carbide spikes per pair.

Sizes: S/M (fits: UK M 2-6.5, W 2.5-7; EURO 35-40),
L/XL (fits: UK M 7.5-13.5, W 7.5+; EURO 41-49)



Product No	Description	Case Qty/MOQ
V3551370-L/XL	Everyday Pro Traction Aid - Lrg/Xlg	24 pairs
V3551370-S/M	Everyday Pro Traction Aid - Sml/Med	24 pairs



LIGHTWEIGHT & AFFORDABLE

Ideal for everyday activities, such as walking, running and shovelling snow.



Powerful traction with maximum grip



REPLACEABLE
ICE DIAMOND™
 TUNGSTEN CARBIDE SPIKES

Product No	Description	Case Qty
V3550770-0/S	Ice Diamond replacement spikes	6

REPLACEABLE
ICE DIAMOND™
 TUNGSTEN CARBIDE SPIKES





HTA

Ideal for drivers, delivery personnel or anyone operating machinery where use of a conventional, full coverage traction aid may interfere with driving capabilities.

Sizes: ONE SIZE FITS MOST



Product No	Size
V3550470-0/S	One size
Case Qty/MOQ	CE
24 pairs	

LIGHT INDUSTRIAL

Ideal for the worker who occasionally needs additional traction on ice and snow while performing their outdoor duties.

Sizes: S/M (fits: UK M 2-6.5, W 2.5-7; EURO 35-40),
L/XL (fits: UK M 7.5-13.5, W 7.5+; EURO 41-49)



Product No	Size
V3550170-L/XL	L/XL
V3550170-S/M	S/M
Case Qty/MOQ	CE
24 pairs	

ALL PURPOSE

All-around solution for most footwear, including boots. Best for those who walk, run or work outdoors.

Sizes: S (fits: UK M 3.5-6.5, W 2.5-5.5; EURO 35-39),
M (fits: UK M 7-9.5, W 6-8.5; EURO 39-43),
L (fits: UK M 10-12.5, W 9-10.5; EURO 43-46),
OSD (fits: UK M 13-14.5, W 11-12.5; EURO 46-50)



Product No	Size
V3550270-L	L
V3550270-M	M
V3550270-S	S
V3550270-XL	XL
Case Qty/MOQ	CE
24 pairs	

ALL PURPOSE INDUSTRIAL

All-around solution for the tough work environment. Best for those who work hard and play harder outdoors.

Sizes: S (fits: UK M 3.5-6.5, W 2.5-5.5; EURO 35-39),
M (fits: UK M 7-9.5, W 6-8.5; EURO 39-43),
L (fits: UK M 10-12.5, W 9-10.5; EURO 43-46),
OSD (fits: UK M 13-14.5, W 11-12.5; EURO 46-50)



Product No	Size
V3550370-L	L
V3550370-M	M
V3550370-S	S
V3550370-XL	XL
Case Qty/MOQ	CE
24 pairs	

HEAVY DUTY

The solution for extreme winter work environments to give you the utmost confidence on ice and snow.

Sizes: S (fits: UK M 3.5-6.5, W 2.5-5.5; EURO 35-39),
M (fits: UK M 7-9.5, W 6-8.5; EURO 39-43),
L (fits: UK M 10-12.5, W 9-10.5; EURO 43-46),
OSD (fits: UK M 13-14.5, W 11-12.5; EURO 46-50)



Product No	Size
V3550570-L	L
V3550570-M	M
V3550570-S	S
V3550570-XL	XL
Case Qty/MOQ	CE
24 pairs	

OVERSHOE PRODUCTS



CONQUER THE TERRAIN

NEOS, a SureWerx® brand has been a leader in overshoe products, providing an extra level of protection, insulation, and traction.

Designed to be worn right over your everyday footwear, made from advanced materials to provide durability and performance in the most extreme conditions.

HARSH WEATHER CONDITIONS CAN PUT YOUR WORKFORCE AT RISK

- Slip trips & falls
- Cold stress
- Hypothermia
- Frost bite

TRACTION
INSULATION
WATERPROOF

FEATURES

Fully Insulated

100% Waterproof

Totally Windproof

Slip Resistant

CONDITIONS

Snow & Ice

All Weather

Wet & Muddy

Rough Terrain

A / Eine / Une Marque / Una Marca / Un Marchio



Brand / Marke

CHOOSE THE RIGHT TRACTION

Glacier Trek™

- Multi-directional lugged outsole provides maximum traction
- Stainless steel hardened spikes
- 16 replaceable cleats embedded
- Additional Heel provides added security on snowy or icy ladders or surfaces (Only available VNG1HEEL)

*Not to be used on hard surfaces

IDEAL FOR:

- Snow, Ice, Uneven Terrain, Rain, Puddles and Slush



Available in Style:

EXGG
N5P3G
VNG1
VNG1HEEL

Vibram® Ninja™

- Aggressive tread for tough terrain
- Multi-directional lugged outsole provides maximum traction

IDEAL FOR:

- Snow, Ice, Rain, Puddles and Slush



N5P3

Perma Outsole

- Multi-directional lugged outsole deep traction in snow, slush and puddles
- Geometrically designed for 4-season protection

IDEAL FOR:

- All Season, Puddles and Slush



VNN1
EXPG
ANN1

Superlite Outsole

- Versatile design for maximum slip resistance
- Durable and lightweight design makes it perfect for stability on wet or uneven surfaces

IDEAL FOR:

- Rain, Puddles and Light Snow



VIS1

CHOOSE THE RIGHT PRODUCT

	ALL SEASON	WET SLIPPERY	COLD WET SLIPPERY
	ADVENTURER	NAVIGATOR 5	EXPLORER GT
	VOYAGER	EXPLORER	NAVIGATOR GT
	VILLAGER		VOYAGER GT
			VOYAGER GT - HEEL

SIZING TABLE

		XS	S	M	L	XL	2XL	3XL	4XL
US	MEN	3.5-5	5.5-7	7.5-9	9.5-11	11.5-13	13.5-15	15.5-17	17.5-19
	WOMEN	5-6.5	7-8.5	9-10.5	11-12.5	13-14.5	15-16.5	-	-
	UK	3-4	5-6	7-8	9-10	11-13	14-15	-	-
	EURO	35-37	38-40	41-42	43-45	46-48	49-50	51-52	53-54

HEALTH SAFETY PRODUCTIVITY

Finding a better way



Neos® Overshoes

INSULATED



OVERSHOES

EXPLORER GT



Sizes: S - 4XL

NAVIGATOR GT



Sizes: XS - 4XL

NAVIGATOR 5



Sizes: XS - 4XL

EXPLORER



Sizes: XS - 3XL

UPPER	500 Denier Nylon - Black	840 Denier Woven Polyester - Gray	840 Denier Woven Polyester - Gray	500 Denier Nylon - Black
OUTSOLE	Glacier Trek™	Glacier Trek™	Vibram® Ninja™	Perma Outsole
TEMP RATING	-29° C / -20° F	-29° C / -20° F	-29° C / -20° F	-29° C / -20° F
HEIGHT	13 in (33 cm)	15 in (38 cm) / Expandable to 20 in (50 cm) /	15 in (38 cm) / Expandable to 20 in (50 cm) /	13 in (33 cm)
WEIGHT	3.9 lbs (1769 g)	4.4 lbs (1995 g)	3.2 lbs (1451 g)	3.1 lbs (1406 g)

Product No	Size	Product No	Size	Product No	Size	Product No	Size
-	-	N5P3G-XS	XS	N5P3-XS	XS	EXPG-XS	XS
EXGG-S	S	N5P3G-S	S	N5P3-S	S	EXPG-S	S
EXGG-M	M	N5P3G-M	M	N5P3-M	M	EXPG-M	M
EXGG-L	L	N5P3G-L	L	N5P3-L	L	EXPG-L	L
EXGG-XL	XL	N5P3G-XL	XL	N5P3-XL	XL	EXPG-XL	XL
EXGG-2XL	2XL	N5P3G-2XL	2XL	N5P3-2XL	2XL	EXPG-2XL	2XL
EXGG-3XL	3XL	N5P3G-3XL	3XL	N5P3-3XL	3XL	EXPG-3XL	3XL
EXGG-4XL	4XL	N5P3G-4XL	4XL	N5P3-4XL	4XL	-	-
Case Qty/MOQ 1 pair		Case Qty/MOQ 1 pair		Case Qty/MOQ 1 pair		Case Qty/MOQ 1 pair	

A / Eine / Une Marque / Una Marca / Un Marchio



Brand / Marke

Ordering E-mail EU eusales@surewerx.com

Ordering E-mail UK uksales@surewerx.com

www.surewerx.eu



Neos® Overshoes

ALL-WEATHER



VOYAGER GT



Sizes: XS - 4XL

VOYAGER GT - HEEL



Sizes: S - 4XL

ADVENTURER



Sizes: XS - 4XL

VOYAGER



Sizes: XS - 3XL

VILLAGER



Sizes: XS - 2XL

500 Denier Nylon - Black	500 Denier Nylon - Black	500 Denier Nylon - Black	500 Denier Nylon - Black	160 Denier Nylon - Black
Glacier Trek™	Glacier Trek™	Perma Outsole	Perma Outsole	Superlite Outsole
-18° C / 0° F	-18° C / 0° F	-18° C / 0° F	-18° C / 0° F	-18° C / 0° F
11 in (28 cm)	12 in (30.5 cm)	15 in (38 cm)	11 in (28 cm)	10.5 in (26.7 cm)
2.8 lbs (1270 g)	3 lbs (1360 g)	2.2 lbs (998 g)	1.7 lbs (771 g)	1.7 lbs (771 g)

Product No	Size	Product No	Size	Product No	Size	Product No	Size	Product No	Size
VNG1-XS	XS	-	-	ANN1-XS	XS	VNN1-XS	XS	VIS1-XS	XS
VNG1-S	S	VNG1HEEL-S	S	ANN1-S	S	VNN1-S	S	VIS1-S	S
VNG1-M	M	VNG1HEEL-M	M	ANN1-M	M	VNN1-M	M	VIS1-M	M
VNG1-L	L	VNG1HEEL-L	L	ANN1-L	L	VNN1-L	L	VIS1-L	L
VNG1-XL	XL	VNG1HEEL-XL	XL	ANN1-XL	XL	VNN1-XL	XL	VIS1-XL	XL
VNG1-2XL	2XL	VNG1HEEL-2XL	2XL	ANN1-2XL	2XL	VNN1-2XL	2XL	VIS1-2XL	2XL
VNG1-3XL	3XL	VNG1HEEL-3XL	3XL	ANN1-3XL	3XL	VNN1-3XL	3XL	-	-
VNG1-4XL	4XL	VNG1HEEL-4XL	4XL	ANN1-4XL	4XL	-	-	-	-
Case Qty/MOQ 1 pair		Case Qty/MOQ 1 pair		Case Qty/MOQ 1 pair		Case Qty/MOQ 1 pair		Case Qty/MOQ 1 pair	

Product No	Description	Case Qty
GSRCSLV	Glacier Trek Spikes	32

OVERSHOES

HEALTH SAFETY PRODUCTIVITY
Finding a better way

INSOLES PRODUCTS



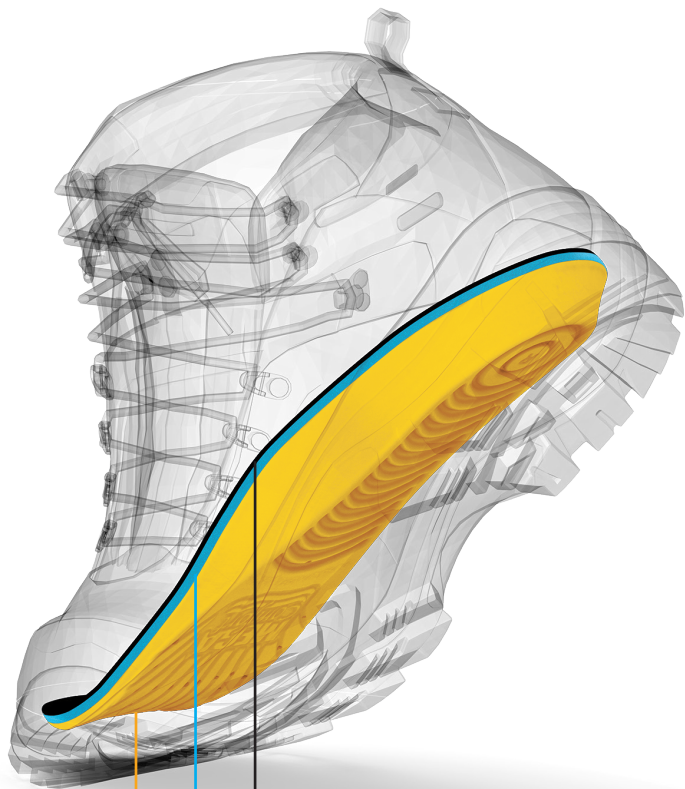
INSOLES

SOLUTIONS

MEGAComfort, a SureWerx® Brand was formed in 2002 as a result of the tremendous need to provide ergonomic solutions which will increase employee health and safety while at the same time be cost-effective.

An innovative work-life wellness company for the workplace, we provide clinically proven and field-tested footwear accessories including patented ergonomic anti-fatigue insoles and orthotics to proactively combat pain and fatigue, while concurrently increasing wearer comfort and productivity.

- Preventative Health & Wellness
- Reduced Cost & Maintenance
- Ergonomic & Anti-Fatigue Solution
- Risk Avoidance & Reduction
- Safer Facility / OSHA Compliance



FEATURES



Ergonomically Designed by a Doctor



Clinically Proven & Field Tested to Reduce Pain & Fatigue



Over 20 Years of Research and Development



Silver Ion Anti-Microbial Technology



Anti-Fungal
Anti-Bacterial
Anti-Perspiration



Odor Reducing



Aeration Holes to Regulate Temperature



Cushioned Heel & Arch Support



Machine Washable

• ***Patented Dual Layer 100% Memory Foam**

• **Soft Open-Celled Memory Foam reduces harmful shear force and provides MAXIMUM COMFORT**

• **Ultra High-Density Memory Foam Ergonomically molded for MAXIMUM SHOCK ABSORPTION**
*Patented Dual Layer 100% Memory Foam

* Patent: US # 8,832,969 | © 2023

COMFORT

SUPPORT

SHOCK ABSORPTION



A / Eine / Une Marque / Una Marca / Un Marchio



Brand / Marke

Ordering E-mail EU eusales@surewerx.com
Ordering E-mail UK uksales@surewerx.com
www.surewerx.eu



MEGACOMFORT® Insoles

MEGA
COMFORT™



PERSONAL ANTI-FATIGUE MAT™

- Maximum Comfort and Shock Absorption
- Patented 100% Dual Layer Memory Foam compresses for safe clearance in steel toe footwear
- Cost effective alternative to expensive matting

Product No	US Size		UK Size		EURO	Case Qty/MOQ
	MEN	WOMEN	MEN	WOMEN		
VPAM-W567		5-6-7		3-5.5	36-38	30 pairs
VPAM-M67/W89	6-7	8-9	5-6.5	6-7.5	39-40	30 pairs
VPAM-M89/W1011	8-9	10-11	7-8.5	8-9.5	41-42	30 pairs
VPAM-M1011/W1213	10-11	12-13	9-10.5	10-11.5	43-44	30 pairs
VPAM-M1213		12-13		11-12.5	45-46	30 pairs
VPAM-M1415		14-15		13-14.5	47-48	30 pairs

ARCH TYPE

- Medium
- High



FOOTWEAR TYPE
Industrial - Safety
and Steel-toe



ENERGYSOLE™

- Thinner profile with sleek design for better fit
- 100% Dual layer memory foam with heel and arch cushioning
- Soft Contoured Arch Support
- Perfect fit in casual, sneakers, running and work footwear.

Product No	US Size		UK Size		EURO	Case Qty/MOQ
	MEN	WOMEN	MEN	WOMEN		
ESOLE-W567		5-6-7		3-5.5	36-38	30 pairs
ESOLE-M67/W89	6-7	8-9	5-6.5	6-7.5	39-40	30 pairs
ESOLE-M89/W1011	8-9	10-11	7-8.5	8-9.5	41-42	30 pairs
ESOLE-M1011/W1213	10-11	12-13	9-10.5	10-11.5	43-44	30 pairs
ESOLE-M1213		12-13		11-12.5	45-46	30 pairs
ESOLE-M1415		14-15		13-14.5	47-48	30 pairs

ARCH TYPE

- Medium
- High



FOOTWEAR TYPE
Casual and Work



MegaSole™



Personal
Anti-Fatigue Mat™ ESD



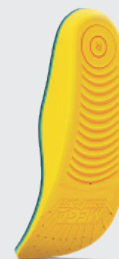
MultiThotic™



PAM
Puncture-Resistant



PAM
Diabetic™



PAM
Square-Toe

Other models are available - Contact your regional sales manager for more information

HEALTH SAFETY PRODUCTIVITY
Finding a better way

INSOLES

VISIT OUR WEBSITE

www.surewerx.eu



JACKSON
SAFETY

FS
FALL SAFE

OBERONTM

sellstrom

dn
duenorth

K1
SERIES

NEOS

MEGA
COMFORT

RUBZ MASSAGE

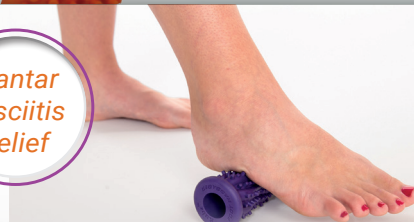


»» Massage Relief for Tired Achy Feet

«« Massage Sore, Tight and Tired Muscles



Plantar Fasciitis Relief



FOOT RUBZ BALL
"THE ORIGINAL"

FOOT MASSAGE ROLLER
"CUSTOMER FAVORITE"

FULL BODY MASSAGE TOOL
"2-IN-1 MASSAGER"

Product No
V4550150-0/S

Case Qty/MOQ
1

Product No
V4550250-0/S

Case Qty/MOQ
1

Product No
V4550350-0/S

Case Qty/MOQ
1

Rubz products fulfill chemical compatibility requirements according to REACH Regulation (EC) 1907/2006 Annex XVII and pH value requirements according to EN ISO 3071:2006.

STANDARD TERMS & CONDITIONS OF SALE

SUREWERX UK LIMITED

1. General

"Jackson Safety" and "Fall Safe": "we", "us" are trading names of SureWerx UK Limited, ("SW") a limited liability company registered in UK and trading as Jackson Safety and Fall Safe, with a registered office located at C/O French Ludlam & Co Limited, 661 High Street, Kingswinford, West Midlands, DY6 8AL, UK. "Buyer": The legal entity to whom we supply goods (collectively "Products") of any kind. Except insofar as otherwise explicitly agreed in writing between SureWerx UK Limited and the Buyer, these Standard Terms & Conditions (the "Conditions") will apply to all transactions between SW and the Buyer, whether this is done in writing, via the internet, electronically or verbally (each a "Contract").

2. Shipment agreements

2.1 An agreement with SW to supply Products is only established when SW has confirmed in writing a Buyer purchase order within 8 days following its receipt. Any amendments must be confirmed in writing by SW.

2.2 Any purchase order not confirmed in writing by SW shall be null and void.

3. Terms of delivery and transportation

3.1 The method of transport shall be determined by SW if not specified by the Buyer. For certain destinations SW may require the buyer to arrange their own transportation on an ex-works basis, SW will make the Buyer aware of this in advance of any order being agreed. Any specific requirements of the Buyer on the transport and shipment will only be performed if the Buyer has declared that it will bear the additional costs.

4. Time of delivery

4.1 The periods stated for delivery are not binding and are only target dates. Failure to meet the requested time of delivery does not in any event, provide grounds for the cancellation of an order or agreement, nor does it entitle the Buyer to any kind of compensation. We explicitly reserve the right to deliver by instalments, each of which will qualify as partial sale. The delivery of an order by instalments cannot in any event justify the refusal to pay for the Products supplied. Any liability on the part of SW for failure or delay in delivery is hereby excluded.

5. Liability

5.1 In the event that the Products supplied are damaged or incomplete, or in the event of any error, missing piece or any other type of irregularity, the Buyer is obliged to refuse the Products on delivery or to only accept them subject to a written reservation. Every complaint relating to the Products as delivered must be sent to us in writing within 5 working days as from the receipt, with a reference to the bill of lading. After that period, the Products will be deemed to have been finally accepted by the Buyer. No goods may be returned without prior written permission from SW. Such permission will not in any way imply that the Products have been acknowledged by SW as being damaged. Goods being returned, in whatever way they are being sent, remain at the Buyer's risk and will be sent to our warehouse, carriage free.

5.2 SW shall not be liable for or responsible for any defect or other claim which arises from (i) normal wear and tear, misuse, negligence, accident, abuse, use not in accordance with standards of proper practice or normal usage conditions set out in the catalogues, manuals or handbooks supplied by SW, modification or alteration not authorized in writing by SW, or use in conjunction with a third party product, or (ii) Buyer's negligence, or (iii) the breach of Buyer's obligations under this Agreement.

6. Delivery and risks

6.1 Where goods travel on an ex works basis delivery is regarded as being complete on the moment of departure from our warehouse

loading dock. It is the Buyer's responsibility to ensure adequate insurance is in place to cover the transit risk. The risk of loss, damage or destruction of the goods to be supplied by SW is borne by the Buyer from the moment that these goods are collected in accordance with this article.

6.2 Where SW arranges the transportation it is the Buyer's responsibility to ensure that the goods are inspected upon receipt and that SW are notified of any shortages or damages within 24 hours, together with supporting photographic evidence. SW will not accept liability to make good any missing or damaged product if this is not the case.

7. Force majeure and hardship

7.1 All delivery and other obligations of SW will be suspended in the event of force majeure. In such cases, SW is only obliged to deliver or perform its obligations to the extent possible. 'Force majeure' includes the following, although this is not an exhaustive list: war, mobilization of troops, embargo, partial or complete strike, lock-out, riot, epidemics, natural disasters, import and export restrictions, machinery failure, staff sickness, fire, explosion, accidents of any kind and any cause hampering the normal supply by our suppliers of raw materials, fuels and inventory for our normal production, transportation or dispatch, as well as all similar circumstances affecting SW, its subcontractors or suppliers.

8. Re-sale

8.1 The Buyer may only re-sell the Products in their original packaging, without modification.

9. Payments

9.1 All amounts due to SW are payable within 30 days as from the invoice date, without discount, deduction or offset.

9.2 SW retains legal title to all Products until settlement has been received in full for the associated Sales Invoice. In the event of non-payment or insolvency SW, or its agents, reserve the right to enter the Buyer's premises, without notice, to recover the Products.

10. Compliance with Laws

10.1 Buyer shall comply with all laws and regulations applicable to the storage, use, handling, installation, registration and labelling of all Products as from their delivery and the disposal of all wastes and residues (including packaging) resulting from your use of the Products.

11. Privacy

11.1 Buyer agrees that SW and entities related with it may collect, store and use Buyer data, including personal data, for the purpose of facilitating its marketing and sale of the Products, and Buyer hereby consents to such collection, storage and use of Buyer data by SW and entities related with it for these purposes.

12. Miscellaneous

12.1 Any provision in these Conditions which is void or inapplicable shall have no effect on the validity of the other provisions. Any invalid clause will be replaced by another one that is appropriate.

12.2 SW may carry out its obligations under the Contract through any agents or sub-contractors appointed by it in its absolute discretion.

13. Applicable law

13.1 All Contracts are deemed executed at the registered office of SW in UK and are governed by the laws of England and Wales. Any dispute concerning the interpretation, implementation and cancellation of the present agreement which cannot be settled amicably will be resolved exclusively by the Courts of England. SW may also introduce any proceedings before the courts of the residence of a debtor. The Vienna Sales Convention does not apply.



www.surewerx.eu



Follow us on Social Media
SureWerx Europe

USA: SureWerx USA Inc.,
325 Corporate Drive,
Elgin, IL, USA 60123
surewerx.com/usa

Canada: SureWerx,
49 Schooner St.,
Coquitlam, BC V3K 0B3
surewerx.com/ca

Europe: SureWerx,
Zona Industrial da Varziela, Rua B,
Lote 54, 4480-620 Vila do Conde, PT
surewerx.eu

UK: SureWerx UK Ltd.,
PO Box 18759, Solihull,
England, B93 3NA, UK
surewerx.eu



Be Smart. Be Safe. Be Sure.®

Foot_PPE_catalogue_012026